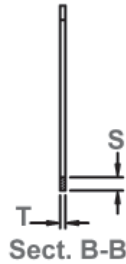
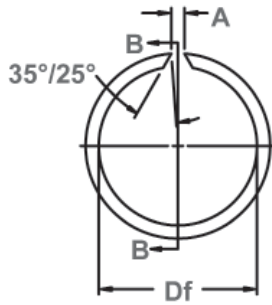


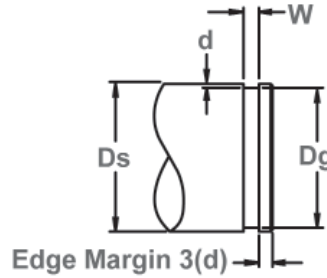
Snap Ring, External, Inch

A light-duty ring designed for needle bearings, once installed in the groove of a shaft the portion of the ring protruding from the groove holds an assembly in place.

SNL Constant Section



Free Diameter & Ring Measurements



Edge Margin 3(d)

Shaft Diameter & Groove Dimensions

Material: SAE 1060-1075

RING SIZE	SHAFT DIAMETER			GROOVE SIZE						RING DIMENSIONS					ALLOWABLE STATIC THRUST LOAD (Lbs.)
				DIAMETER		WIDTH	DEPTH	FREE DIAMETER		THICKNESS	SECTION		FREE GAP		
	Ds DEC	Ds FRACT.	Ds mm	Dg	TOL.	W	d	Df	TOL.	T ±.002	S	TOL.	A min	A Max	
SNL-50	.500	1/2	12.7	.474		.039	.013	.465	+.000	.035	.048		.062	.218	460
SNL-62	.625	5/8	15.88	.597	±.002	+.003 -.000	.014	.587	-.025	.035	.062		.062	.218	520
SNL-75	.750	3/4	19.05	.716			.017	.704		.042	.078	±.003	.062	.218	900
SNL-87	.875	7/8	22.23	.833			.021	.823		.042	.093		.125	.281	1100
SNL-100	1.000	1	25.40	.954	±.003		.023	.944		.042	.093		.125	.281	1200
SNL-112	1.125	1-1/8	25.58	1.077			.024	1.065		.042	.125		.125	.281	1600
SNL-118	1.187	1-3/16	30.15	1.135			.026	1.120	+.000	.042	.125		.125	.281	1700
SNL-125	1.250	1-1/4	31.75	1.194			.028	1.179	-.031	.042	.125		.125	.281	1800
SNL-131	1.312	1-5/16	33.32	1.252		.046	.030	1.232		.042	.125		.125	.281	1900
SNL-137	1.375	1-3/8	34.93	1.309		+.003	.033	1.289		.042	.125		.125	.281	2010
SNL-143	1.437	1-7/16	36.50	1.369	±.004	-.000	.034	1.349		.042	.125		.125	.281	2120
SNL-150	1.500	1-1/2	38.10	1.430			.035	1.410		.042	.125		.125	.281	2260
SNL-162	1.625	1-5/8	41.28	1.545			.040	1.520		.042	.156		.156	.437	2800
SNL-168	1.687	1 -11/16	42.85	1.607			.040	1.582		.042	.156		.156	.437	2900
SNL-175	1.750	1-3/4	44.45	1.670			.040	1.645		.042	.156		.156	.437	3000
SNL-193	1.937	1-15/16	49.20	1.857			.040	1.832	+.000	.042	.156	±.005	.156	.437	3100
SNL-200	2.000	2	50.80	1.920			.040	1.895	-.062	.042	.156		.156	.437	3200
SNL-218	2.187	2-3/16	55.55	2.107			.040	2.082		.042	.156		.156	.437	3400
SNL-225	2.250	2-1/4	57.15	2.170			.040	2.145		.042	.156		.156	.437	3500
SNL-237	2.375	2-3/8	60.33	2.295			.040	2.270		.042	.156		.156	.437	3600
SNL-250	2.500	2-1/2	63.50	2.420			.040	2.390		.042	.156		.156	.437	3650
SNL-275	2.750	2-3/4	69.85	2.626			.062	2.596		.062	.187		.156	.468	5790
SNL-293	2.937	2-15/16	74.60	2.813			.062	2.783		.062	.187		.156	.468	6150
SNL-300	3.000	3	76.20	2.876	±.006	.068	.062	2.846	+.000	.062	.187		.156	.468	6250
SNL-312	3.125	3-1/8	79.38	3.000		+.004	.062	2.965	-.078	.062	.187		.156	.468	6400
SNL-325	3.250	3-1/4	82.55	3.125		-.000	.062	3.090		.062	.187		.156	.468	6500
SNL-337	3.375	3-3/8	85.73	3.250			.062	3.215		.062	.187		.156	.468	6600
SNL-350	3.500	3-1/2	88.90	3.375			.062	3.340		.062	.187		.156	.468	6700
SNL-375	3.750	3-3/4	95.25	3.610			.070	3.570		.078	.218		.187	.562	8800
SNL-400	4.000	4	101.60	3.860		.086	.070	3.820		.078	.218		.187	.562	9000
SNL-425	4.250	4-1/4	107.95	4.110		+.005	.070	4.070	+.000	.078	.218		.187	.562	9200
SNL-450	4.500	4-1/2	114.30	4.360		-.000	.070	4.320	-.093	.078	.218		.187	.562	9400
SNL-475	4.750	4-3/4	120.65	4.610			.070	4.560		.078	.218		.187	.562	9200
SNL-500	5.000	5	127.00	4.860			.070	4.800		.078	.218		.187	.562	9000
SNL-550	5.500	5-1/2	139.70	5.340		.103	.080	5.280		.093	.250		.218	.750	13000
SNL-600	6.000	6	152.40	5.840		+.005	.080	5.775	+.000	.093	.250		.218	.750	9000
SNL-650	6.500	6-1/2	165.10	6.340		-.000	.080	6.270	-.125	.093	.250		.218	.750	7500
SNL-700	7.000	7	177.80	6.840	±.008		.080	6.765		.093	.250		.218	.750	6100
SNL-750	7.500	7-1/2	190.50	7.320		.120	.090	7.245	+.000	.109	.281		.218	.812	
SNL-800	8.000	8	203.24	7.820		+.005 -.000'	.090	7.740	-.156	.109	.281		.218	.812	

Hardness: All Ring Sizes - HRC 42-52

For alternate cutoff styles, contact Rotor Clip Technical Sales at +1.732.469.7333 (E-mail: tech@rotorclip.com)

